

IceZone[®] X Installation Instructions for Hoshizaki DCM-500 Ice and Water Dispensers



This module will show the steps to install IceZone[®] X on Hoshizaki[®] DCM-500 Ice and Water Dispensers. Please review the entire instructions prior to installation.

Caution: Installation should be done by a qualified technician using appropriate safety equipment and procedures.

Follow the manufacturer's guidelines for cleaning the ice and water dispenser thoroughly.



Before Installing IceZone[®] X, clean and sanitize the interior of the ice and water dispenser thoroughly according to the manufacturer's guidelines. All surfaces should be free of slime and scale before starting the installation.

Recommended Tools

Hand Drill

Phillips Bit Driver

1/8" Drill Bit

1/2" Drill Bit

1 1/8" Step Drill Bit

1/4" Nut Driver

Phillips Screwdriver

Safety Goggles

Hose Cutter or Utility Knife

Channel Lock Pliers

Marker to mark hole locations

File or de-burring tool to de-burr holes



Installation Overview

This is a Hoshizaki[®] DCM-500 Model Ice and Water Dispenser with IceZone[®] X installed.

Angle



Front



Side



Preparing the DCM-500

Switch the power to the dispenser to “off” and unplug from the power source.

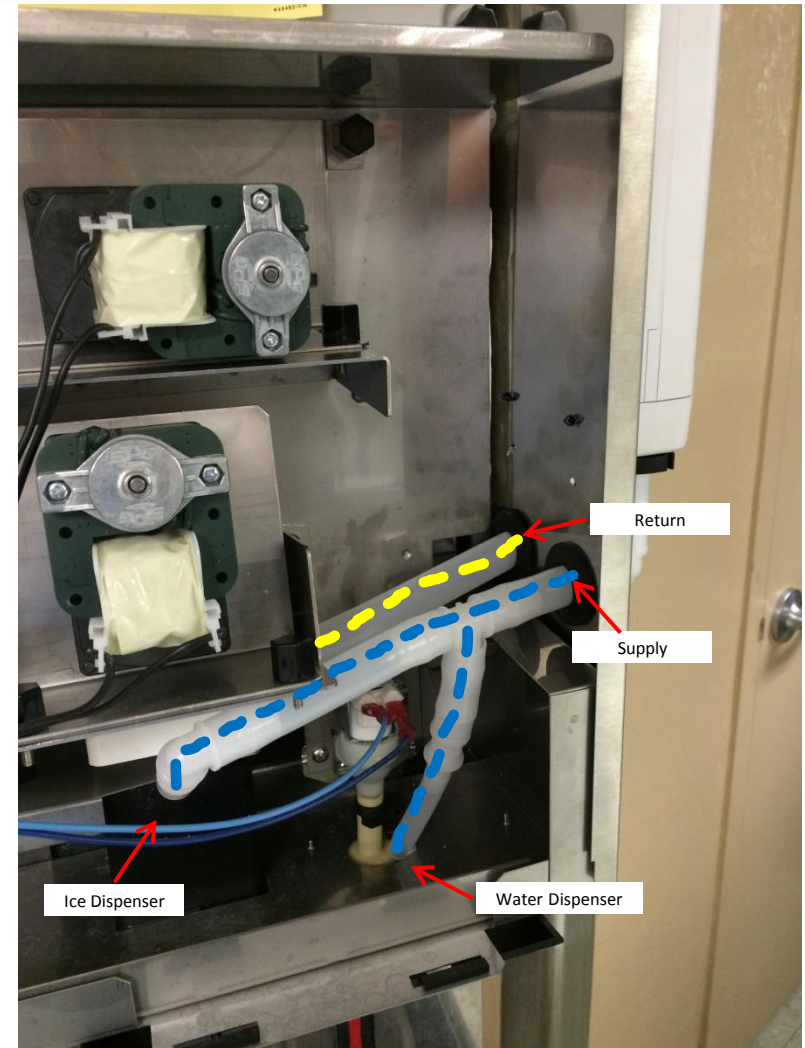
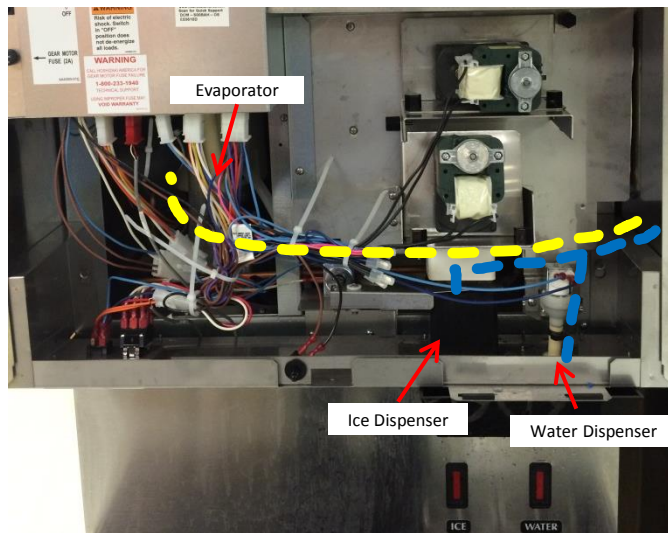
Remove the exterior covers to access the interior of the dispenser.



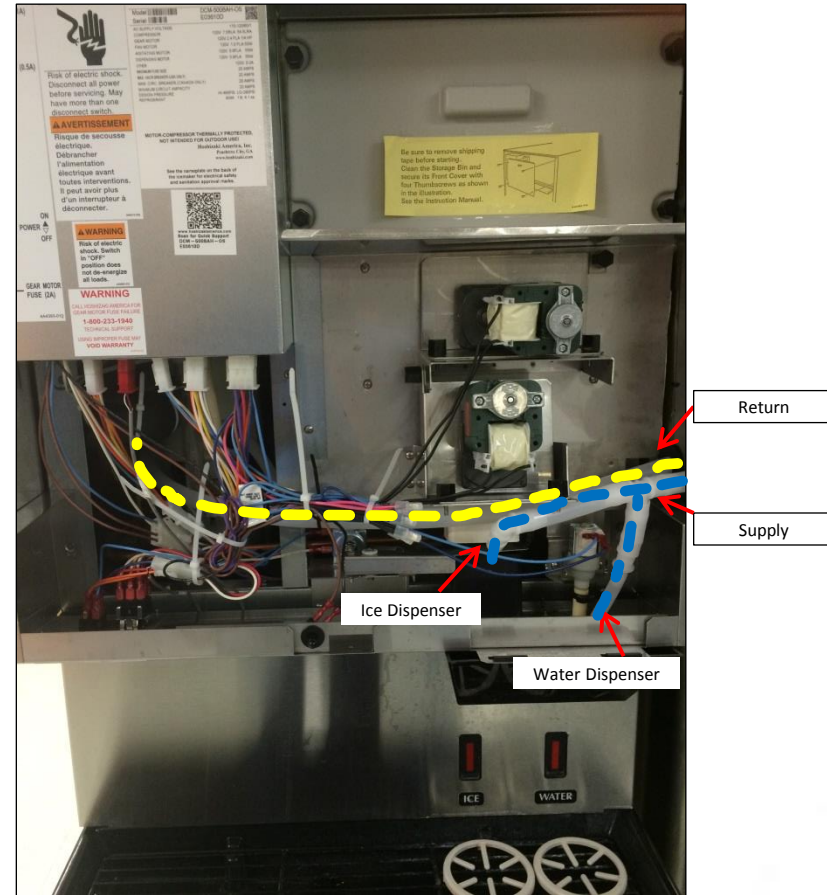
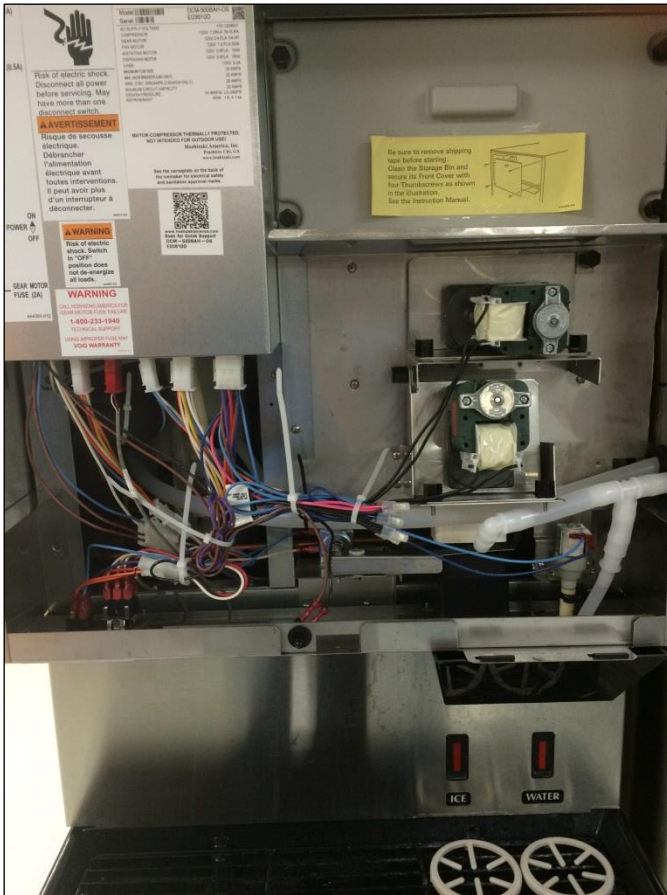
Installation Overview

Note the following paths and locations:

- Supply Line
- Treatment Areas, including
 - Ice Dispenser
 - Water Dispenser
 - Ice Production
- Return Line

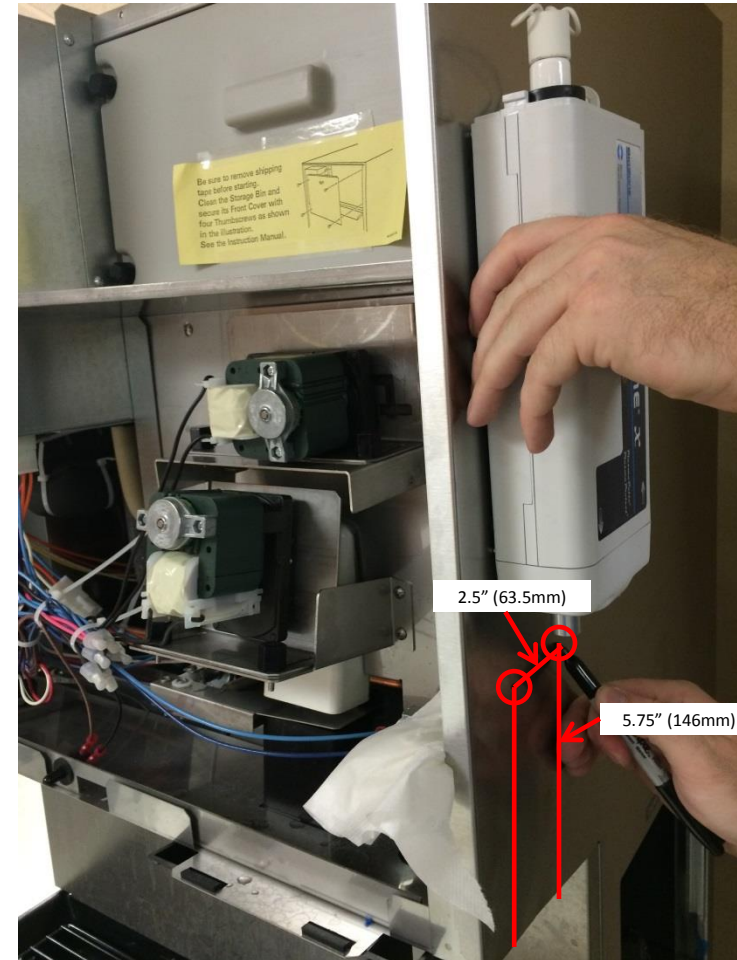


Installation Overview



Installing IceZone®

Locate the 2 holes for the IceZone® supply and return tubing grommets with the dimensions shown.



Installing IceZone[®] -X

Drill the 2 holes for the IceZone[®] supply and return tubing grommets with a 1 1/8" step drill.

Remove the cover while drilling to prevent debris from contaminating the dispenser.

Deburr the holes and install the grommets as shown.



Installing IceZone[®] -X

Remove the service cover from the IceZone[®] unit.

This provides access to the lamp, power input and mounting boss.

As the screw is removed from the cover, be sure to keep it with the cover so it is available for re-assembly.

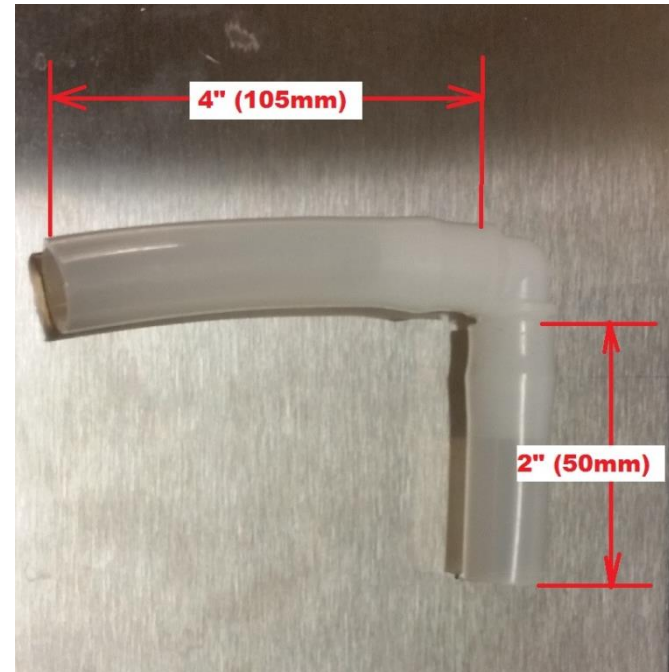


Installing IceZone[®] -X

Cut the length for the IceZone[®] Supply 5/8" ID tubing with the dimensions shown. Install tubing on the 90 degree elbows.

Return 5/8" ID tubing will be longer than 4", and cut to length.

Installer's Tip: Heating the tubing in hot water eases the installation of the tubing onto the fittings.



Installing IceZone® -X

Install the IceZone® supply and return 5/8" ID tubing as shown.

Use the location of the IceZone® with tubing installed in grommets to locate the mounting hole.



Installing IceZone[®] -X

Mark the hole to mount the IceZone[®] unit on the panel.

Use a pen to locate the mounting hole.

Drill a 1/8" hole.



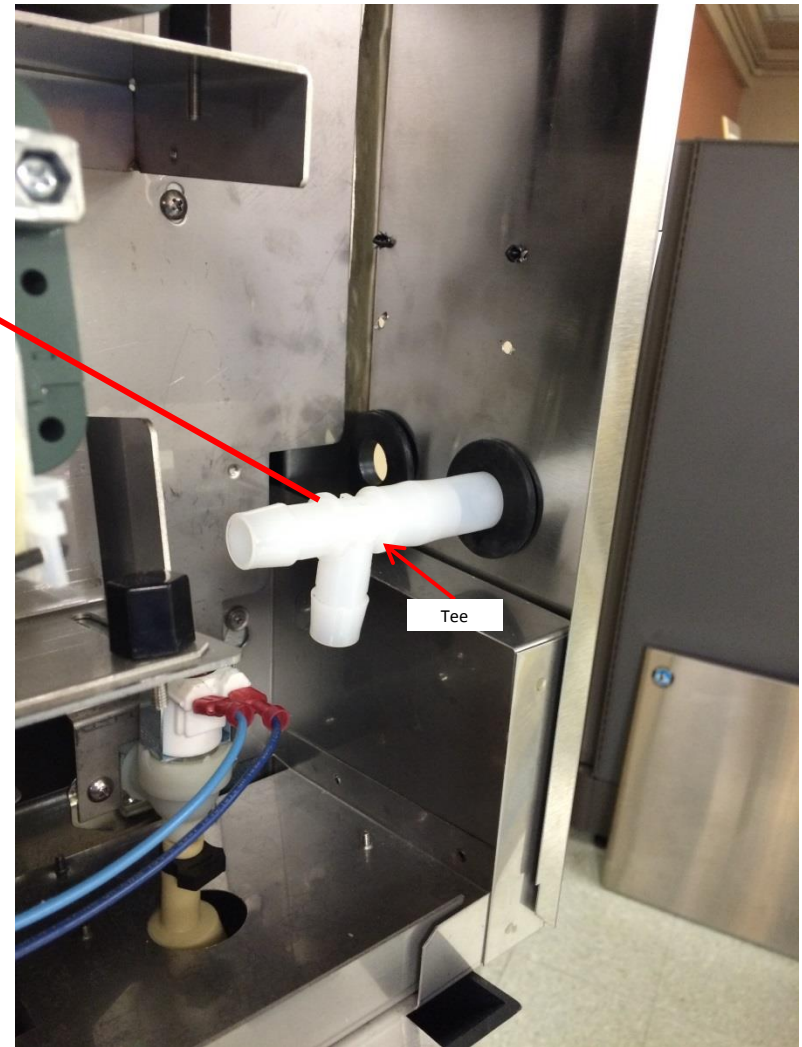
Installing IceZone[®] -X

Place the mounting rivet into the mounting hole.



Installing Supply Line Water Dispenser Segment

Install the Tee fitting into the supply line 5/8" tubing inside the dispenser enclosure.

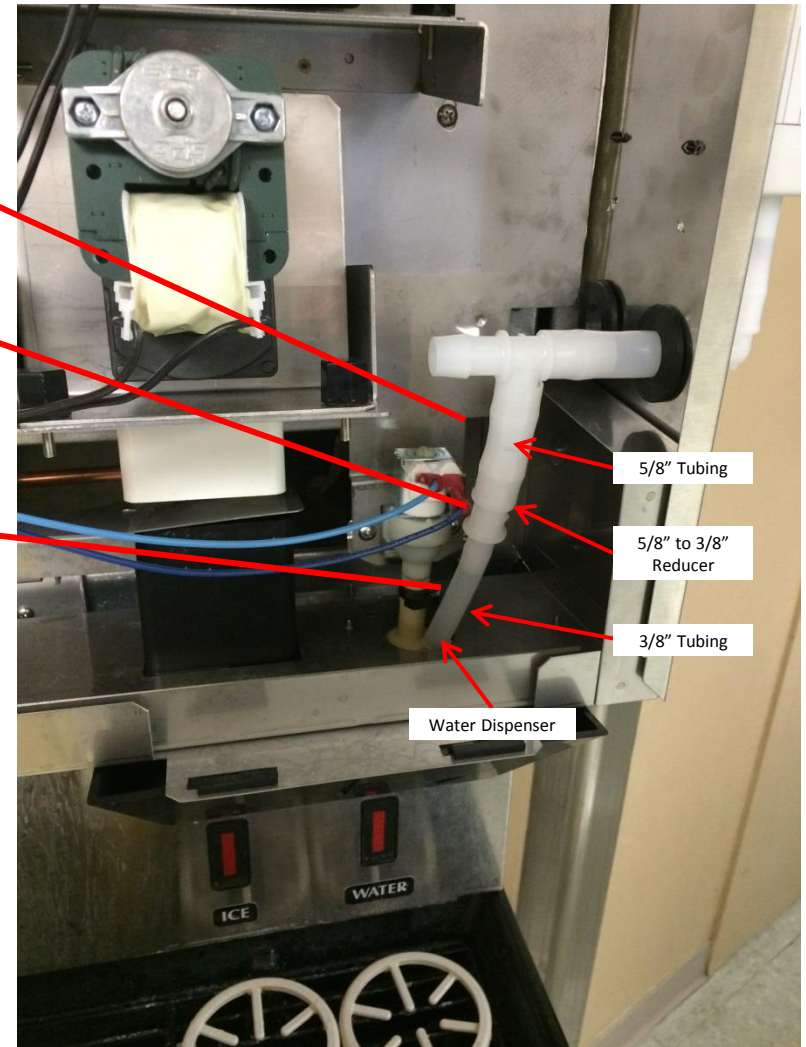


Installing Supply Line Water Dispenser Segment

Cut approximately 2" of 5/8" tubing and attach to Tee fitting

Attach 5/8" to 3/8" Reducer fitting 2" supply line segment

Cut approximately 5" of 3/8" tubing and attach to Reducer fitting



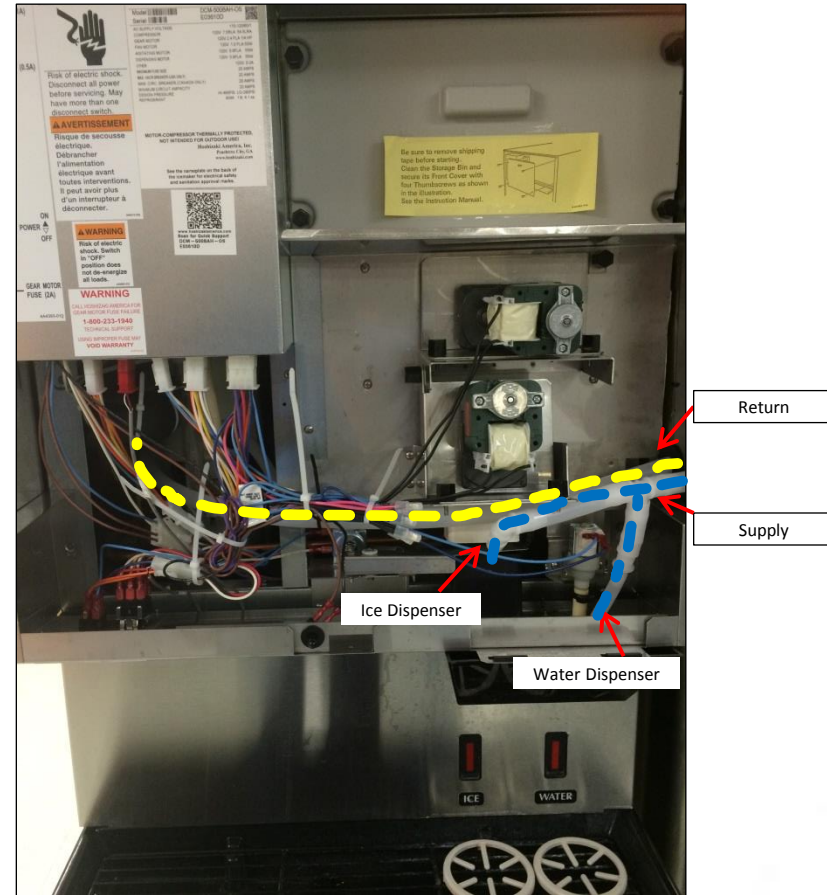
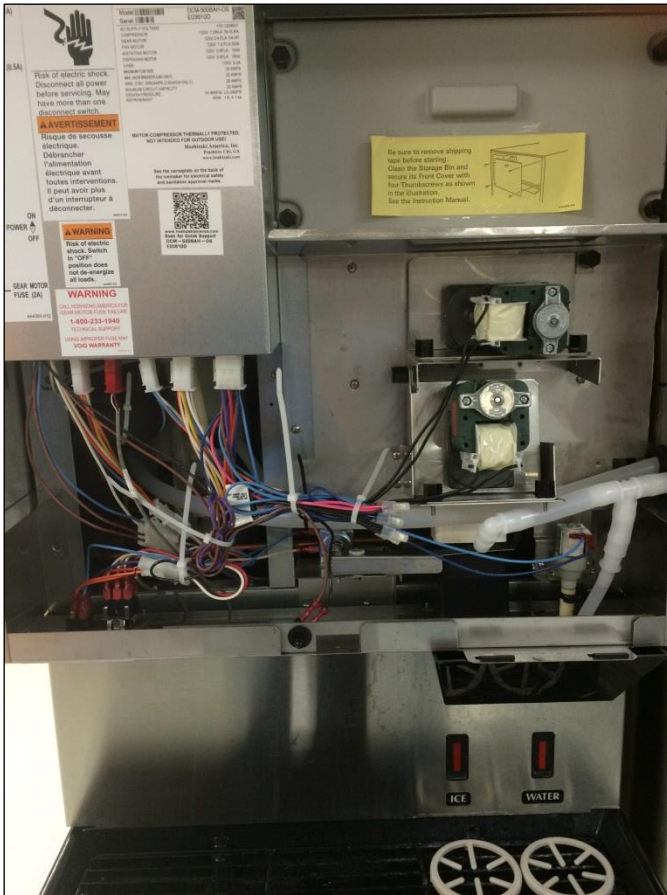
Installing Supply Line Ice Dispenser Segment

Cut approximately 6" of 5/8" tubing and attach to Tee fitting

Attach Elbow fitting to 6" supply line segment and direct towards Ice Chute



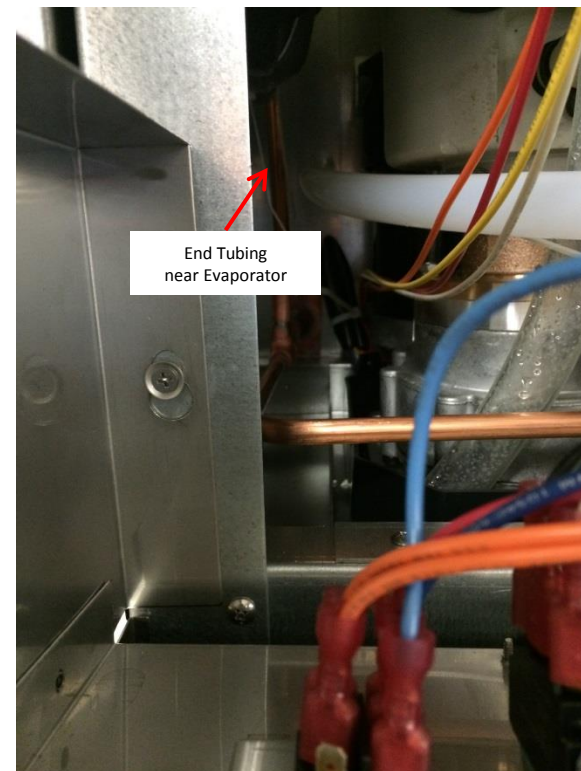
Installing Return Line Segment



Installing Return Line Segment

Secure 5/8" ID Return tubing with zip tie on vertical framing

Continue 5/8" ID Return tubing and terminate near Evaporator



Powering IceZone®

Insert the DC plug from the wall adapter through the “P” shaped hole in the service cover.

Plug the DC connector into the IceZone® Unit’s power input plug.



Powering IceZone®

Reinstall the service cover and secure with the original screw.



Powering IceZone®

IceZone-X® comes with a standard NEMA 1-15 ungrounded (Type A) wall adapter that can be powered with a 100-240V AC 50/60Hz wall plug (NEMA 1 or NEMA 5 outlet).



Powering IceZone®

The IceZone® runs **24 hours/day, 7 days per week.**

Be sure that the power outlet used to power IceZone® is not switched off.

Check to make sure the blue light is lit on the top of the IceZone® X.



IceZone[®] Operating Status Indicators

When IceZone[®] is connected to power correctly and the operation is normal a blue light shows on top of the unit.



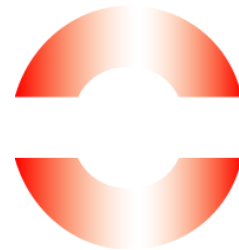
**Blue:
Operation Normal**

When the red light is steady on top of the IceZone[®], the lamp needs to be changed.



**Red:
Replace Bulb**

When the red light is flashing on top of the IceZone[®], the unit requires service.



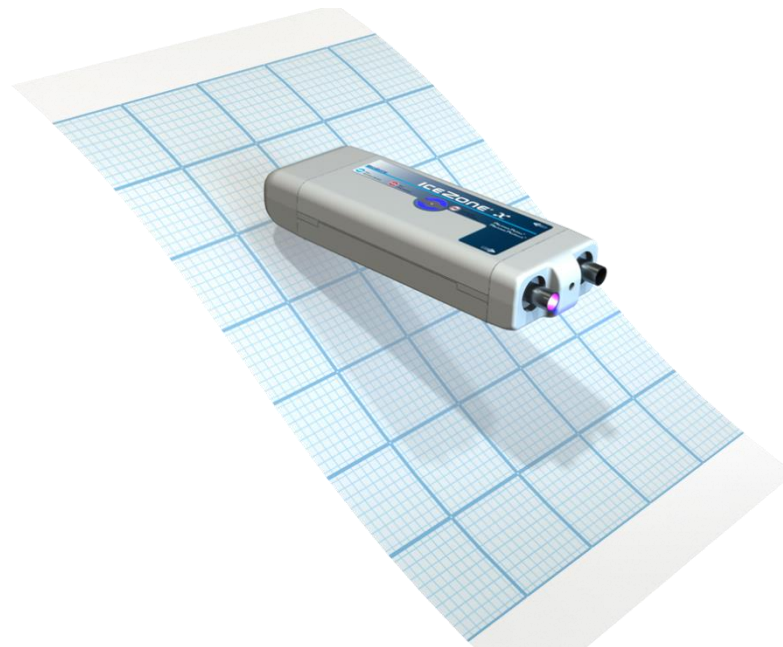
**Flashing Red:
Service Required**

BIOZONE[®]
SCIENTIFIC INTERNATIONAL

ICEZONE[®] *x* Installation

Thank you for installing

ICEZONE[®] *x*



www.BiozoneScientific.com